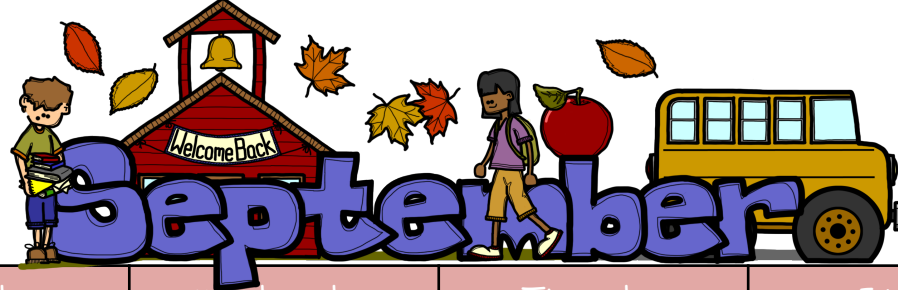


# Delaware Valley School District



Elementary/Primary  
Lunch Menu  
Lunch Price: \$2.00

Menu Subject to Change

Monday	Tuesday	Wednesday	Thursday	Friday	Daily Choices
28 Pizza Sticks with Marinara Dipping Cups Tomato and Cucumber Salad Assorted Fruit	29 Warrior Sampler Chicken Tender, Corn Dogs, Mozzarella Sticks Carrots Sticks with Ranch Juice Assorted Fruit	30 Chicken Parmesan Sandwich Fries Tossed Salad Assorted Fruit	31 Brunch for Lunch French Toast Sticks Sausage Patty Hash Brown Juice Assorted Fruit	1 Pizza Garden Salad Veggies with Dip Assorted Fruit	<p><b>Milk</b> 1%, skim, and flavored milk available daily</p> <p><b>Lunch</b> <b>NEW Daily Alternates</b> M: Chicken Nuggets T: Hot Dog W: Popcorn Chicken Th: Corn Dog Nuggets F: Chicken Patty</p> <p><b>Breakfast \$1.25</b> Milk, Juice, Fruit, and Jump Start Cereal Kits Offered Daily</p> <p>M: WG Donuts T: Mini Pancakes W: Yogurt Parfait Th: Pancake and Sausage Sticks F: Muffins</p>
4 Labor Day Recess	5 Cheesy Beef Nachos with Lettuce, Tomato, and Cheese Rice and Beans Assorted Fruit	6 Pasta with Meat Sauce Dinner Roll Caesar Salad Cookie Assorted Fruit	7 BBQ Pork on a Pretzel Roll Potato Smiles Carrots and Coleslaw Assorted fruit	8 Pizza Garden Salad Veggies with Dip Assorted Fruit	
11 Popcorn Chicken with Mashed Potatoes Corn Juice Assorted Fruit	12 Chicken Fajita Seasoned Rice with Beans Apple Crisp Assorted Fruit	13 Mac and Cheese Seasoned Veggies Apple Crisp Assorted Fruit	14 Cheese Steak Sandwich Fries Baked Beans Assorted Fruit	15 Pizza Garden Salad Veggies with Dip Assorted Fruit	
18 Mozzarella Sticks Caesar Salad Juice Assorted Fruit	19 Walking Taco Seasoned Rice Corn Churro Assorted Fruit	20 Cheese Raviolis Dinner Roll Broccoli Assorted Fruit	21 Brunch for Lunch French Toast Sticks Hash Brown Patty Juice Assorted Fruit	22 Pizza Garden Salad Veggies with Dip Assorted Fruit	
25 Warrior Sampler Chicken Tender, Corn Dogs, Mozzarella Sticks Carrots Sticks with Ranch Juice Assorted Fruit	26 Cheesy Beef Nachos with Lettuce, Tomato, and Cheese Rice and Beans Assorted Fruit	27 Chicken Alfredo with a Twist Broccoli Jell-O Assorted Fruit	28 Pizza Sticks with Marinara Dipping Cups Tomato and Cucumber Salad Assorted Fruit	29 Pizza Garden Salad Veggies with Dip Assorted Fruit	

# An Important Note from the Cafeteria

## School Café

Welcome back! We are excited to start another great year in the Delaware Valley Cafeteria. At the end of last year we transitioned over to School Café. This program provides many benefits for you to help manage your child's cafeteria account. Please make sure you have set up your School Café account at:

<https://www.schoolcafe.com/>

## School Café Benefits

- Add lunch money easily to your child's account
- See when and what your child buys for lunch
- Easy to use app available
- Set up notifications to get low balance alerts

\*\*Cash or check can still be sent in for your child's account. Money will show up in your School Café account.\*\*

## Free and Reduced Lunch Applications

Applications should be done online this year on School Café:

<https://www.schoolcafe.com/>

## 1 Register

\* You will be asked to verify your security answer and contact information when you request help with your username or password, or other information on your Profile page.

- Click [Register](#)
- Verify "I'm registering as a Parent" is selected and click [Next Step](#)
- Enter your school district name and then click [Next Step](#)
- Enter your name and contact information, and then click [Next Step](#)
- Set up your username and password
- Select a **Security Question** and enter a **Security Answer**, and click [Next Step](#)
- Click **I'm not a robot** and follow the reCAPTCHA prompts
- Check **I accept the Terms & Conditions** and click [Create My Account](#)

## 2 Add Your Student(s)

- Click [Students → Student Accounts](#)
- Click [Add a Student](#)
- Enter your **Student's ID** [and **Lunch PIN**, if asked] and select your student's **School**
- Click [Search & Verify Student](#)
- Click [Add this Student](#)

## Set Automatic Payment

- Click [Students → Student Accounts](#)
- Click **Automatic Payment** (🔄) in a student listing
- Enter **Payment Amount**
- Enter amount in **Balance Threshold** to trigger payment
- Select a **Payment Source**
- Set **Auto Pay Expiration Date** for stop payment date
- Click [Add Automatic Payment](#)

## 3 Add Payment Source

- Click [My Account → Payment Sources](#)
- Click [Add a Card](#)
- Enter your **Card Number** and **Card Expiration** date
- Enter a name to associate with this card, if wanted
- Click [Add Card](#)

## 4 Make a Payment

- Click [Students → Student Accounts](#)
- Click [Make a Payment](#)
- Enter **Payment** dollar amount
- Click
- Select a [Payment Method](#), or enter card information for a one-time payment
- Click

## Set Low Balance Alerts

- Click [Students → Student Accounts](#)
- Click **Low Balance Alert** (🔔) in a student listing
- Enter **Threshold** amount
- Enter number of days to elapse between alerts
- Click [Set](#)